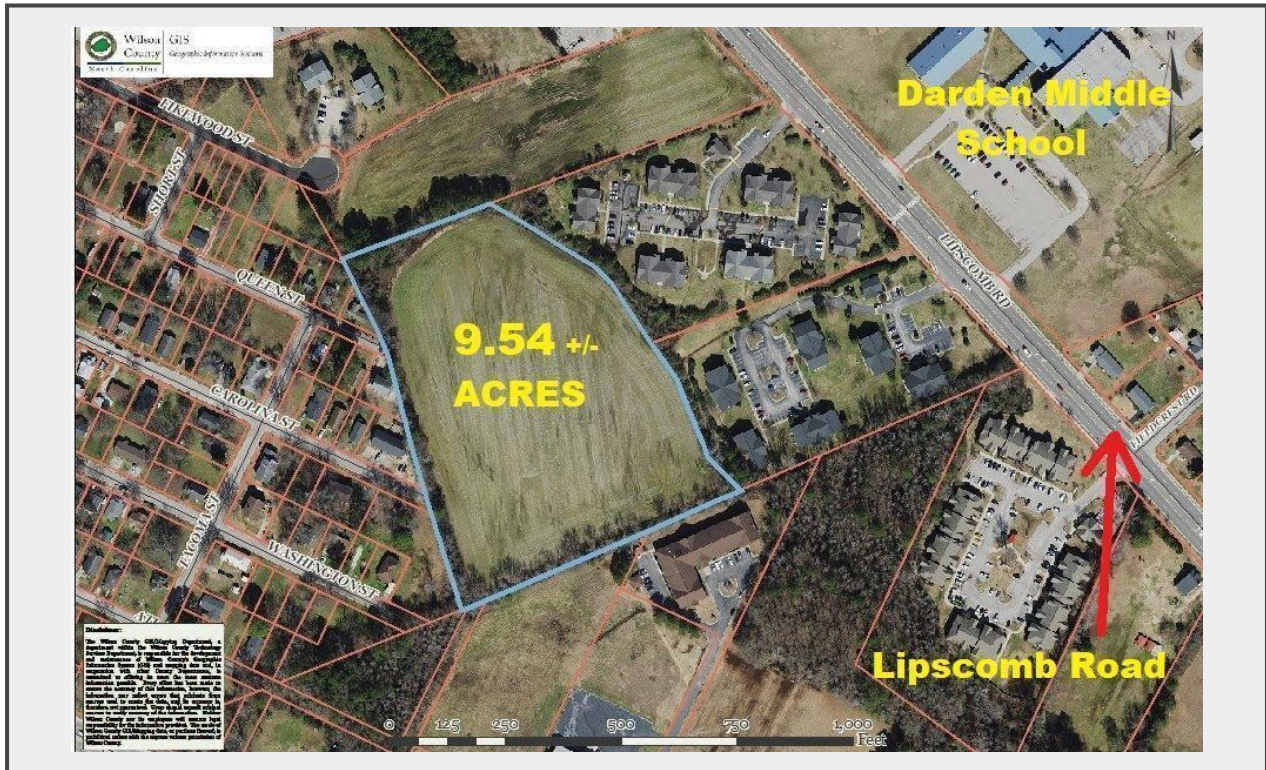


Sale Name: Eastern NC Land Tracts, Commercial Land & Single Family Residences Auction

LOT 5 - 9.54 +/- Acres Excellent Multi-Family & Commercial Development Land, at end of Queen St & Carolina St., Wilson, NC, ZONED RMX. City Water & Sewer available, PIN 3721-97-5696.000



Description

9.54 +/- Acres Outstanding Multi-Family & Commercial Development Land in growth area of Wilson, NC. Located at the end of Queen Street, end of Carolina Street and off Lipscomb Road, Wilson, NC 27893. ZONED Residential Mixed-Use (RMX). Convenient to all the Medical, Shopping & Restaurant Amenities in Wilson. Close proximity to Darden Middle and other Award Winning Schools. Convenient Drive to Raleigh, Rocky Mount & Greenville. Wilson City Water & Sewer available. PIN 3721-97-5696.000

Quantity: 1



<https://bids.houseauctioncompany.com/>